



[www.maniflex.eu](http://www.maniflex.eu)

Operating pressure  
  
**7** Bar

Maximum capacity  
  
**60** Kg

Working radius  
  
**3000** mm

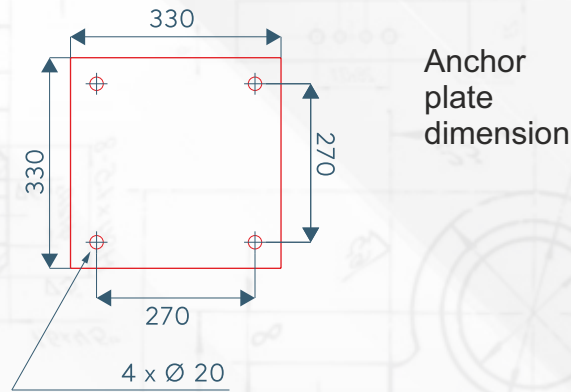
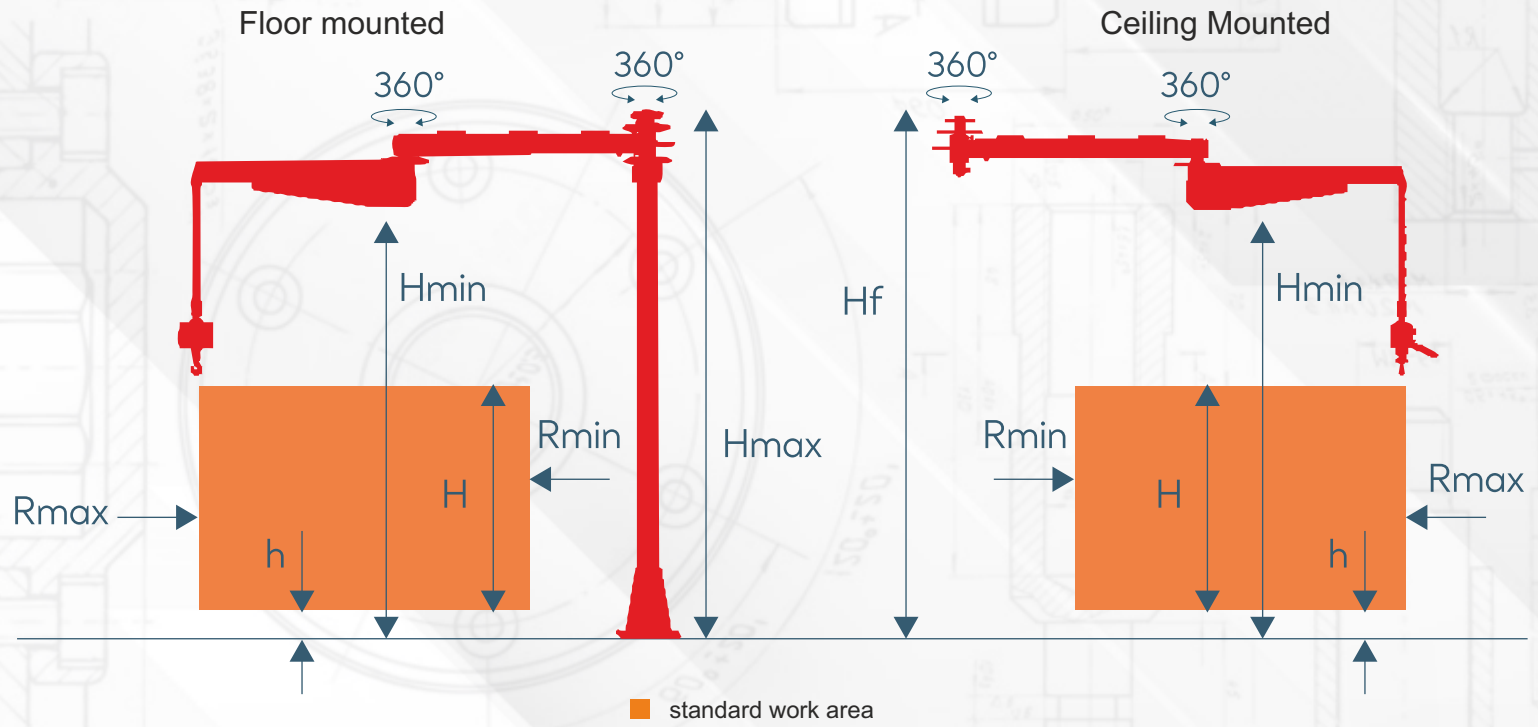
The Maniflex EOS manipulator is a versatile handling solution featuring a pneumatic actuator with integrated double lifting cable.

Designed for optimal ergonomics and efficiency, it excels in palletizing, unloading, and various production applications.

Its adaptable gripping system safely handles diverse product types across industries, from woodworking to food sector, even in hazardous ATEX environments.

With flexible installation options, the EOS can be customized to perfectly suit your specific needs.

# Technical Parameters



## TECHNICAL DATA

EOS

Max. Capacity / kg		35	60
Max. working radius / mm	Rmax	3000	2500
Min. working radius / mm	Rmin	200	190
Vertical Lift / mm	H	1600	1600
Lowest vertical lifting capacity / mm	h	200	200
Maximum height / mm	Hmax	2525	2525
Min. Height / mm	Hmin	2100	2100

\*Size may vary and can be adapted to customer needs.