



[www.maniflex.eu](http://www.maniflex.eu)

Operating pressure  
  
**7** Bar

Maximum capacity  
  
**180** Kg

Working radius  
  
**4500** mm

The Maniflex REA manipulator is equipped with a pneumatic actuator with integrated double lifting cable. Thanks to specific gripping tools, this cable manipulator allows you to move loads of up to 180 kg in any direction with maximum fluidity and without any effort.

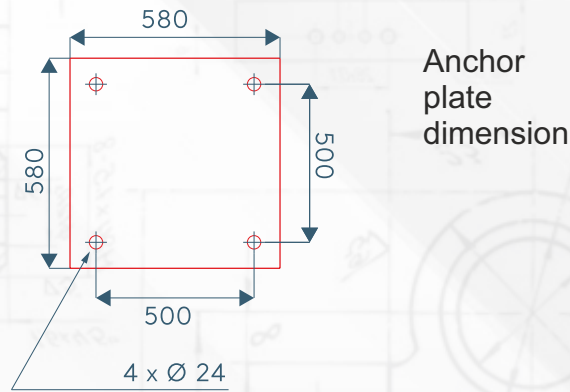
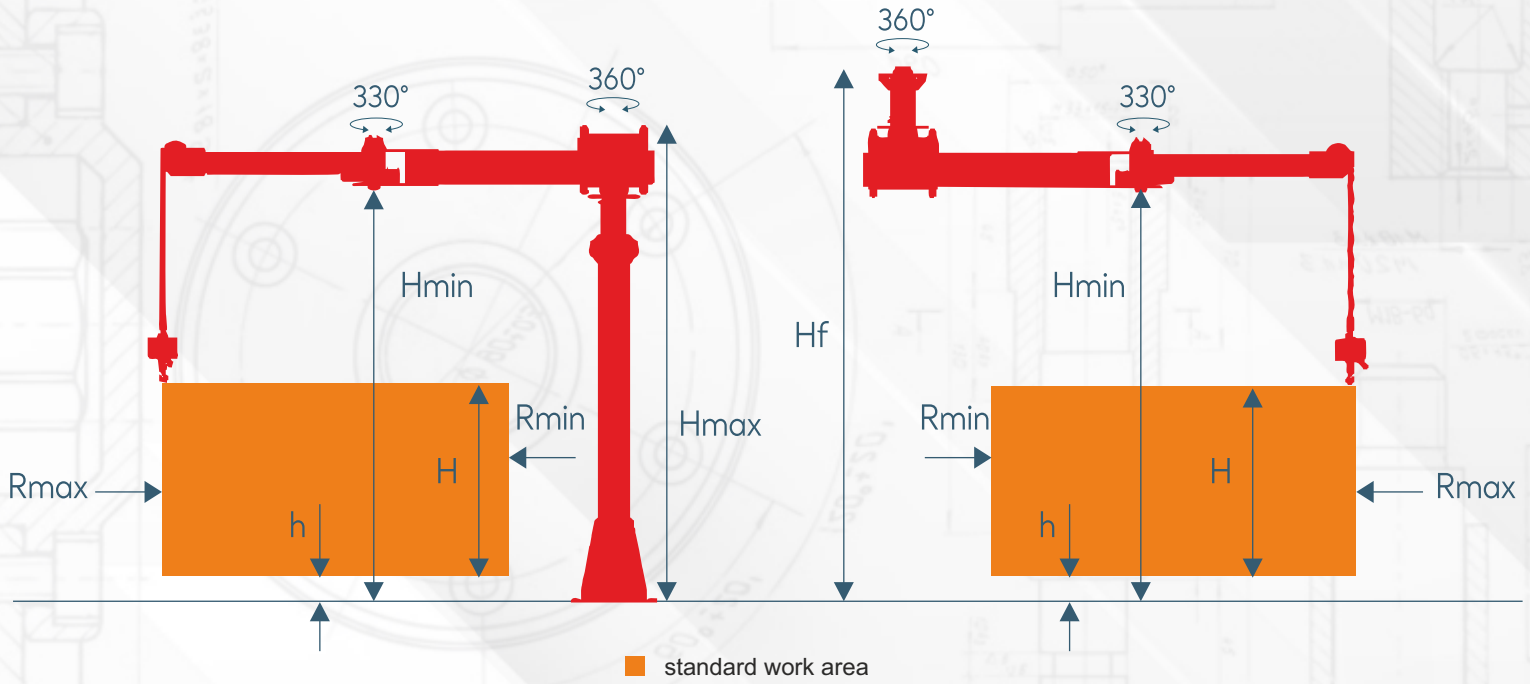
Ideal for meeting the specific needs of different industrial sectors, from the tobacco industry to the electrical industry, the REA manipulator guarantees ergonomics, safety and maximum performance even in ATEX environments.

The manipulator has various installation options, allowing a wide flexibility to meet the specific needs of the customer. The available configurations ensure efficient integration in various operating contexts, guaranteeing versatility and optimal functionality.



Floor mounted

Ceiling mounted



## TECHNICAL DATA

REA

Max. capacity / kg		180	180	180	180
Max. working radius / mm	Rmax	3000	3500	4000	4500
Min. working radius / mm	Rmin	650	760	870	980
Vertical Lift / mm	H	2000	2000	2000	2000
Lowest vertical lifting capacity / mm	h	200	200	200	200
Maximum height / mm	Hmax	3300	3300	3300	3300
Max. ceiling height / mm	Hf	3750	3750	3750	3750
Minimum height / mm	Hmin	2900	2900	2900	2900

\*Size may vary and can be adapted to customer needs.