

www.maniflex.eu

Operating pressure

7 Bar

Maximum capacity

180 Kg

Working radius

6000 mm

The Maniflex TEIA manipulator is a rope manipulator equipped with an integrated double-cable pneumatic actuator.

This rope manipulator moves on aluminum rails that make it easy to handle and ensure precision throughout the working area.

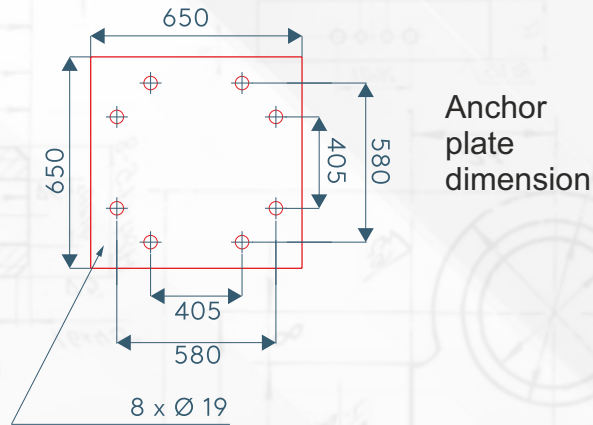
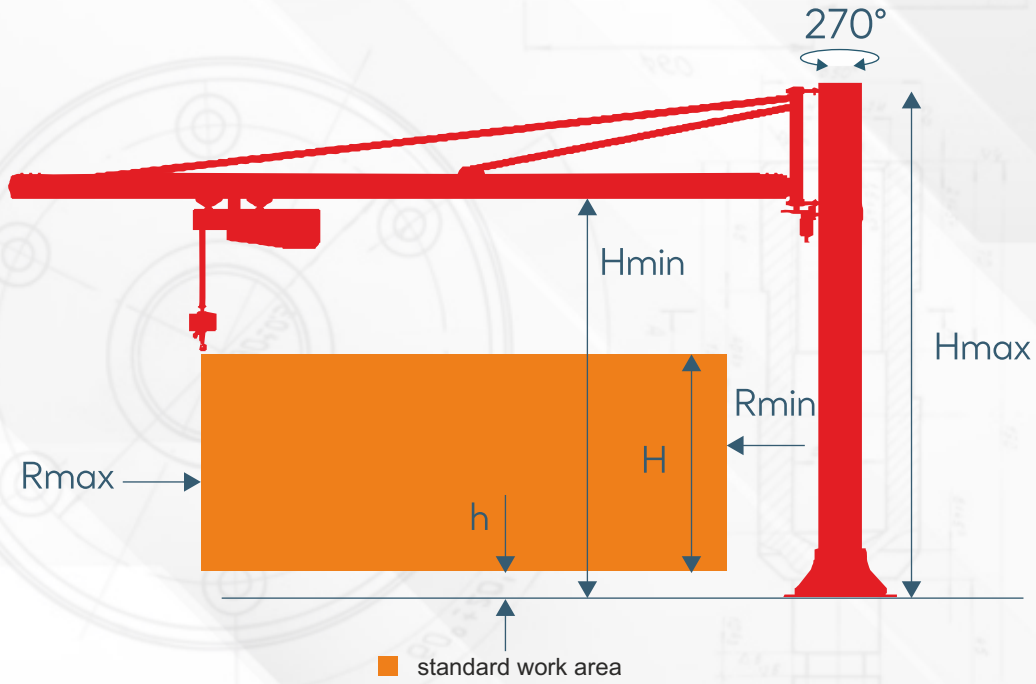
Ensuring maximum safety and comfort for operators, it is the ideal solution to increase efficiency in various industrial sectors, including chemical and textile, even in areas at risk of explosion.

Thanks to its installation flexibility, the manipulator can be easily integrated into any work environment, adapting to different layouts and variable load requirements.

This allows for optimizing production processes and increasing overall efficiency.



Floor mounted



TECHNICAL DATA

TEIA

Max. Capacity / kg		90	180
Max. working radius / mm	Rmax	4000/6000	4000/6000
Min. working radius / mm	Rmin	1350	1350
Vertical Lift / mm	H	1600	1600
Lowest vertical lifting capacity / mm	h	200	200
Maximum height / mm	Hmax	3870	3870
Min. Height / mm	Hmin	2600	2600

*Size may vary and can be adapted to customer needs.